

SONIFEX

www.sonifex.co.uk

t:+44 (0)1933 650 700

f:+44 (0)1933 650 726

sales@sonifex.co.uk



Mentor Time-Server
**Time Synchronisation
Software**



SONIFEX

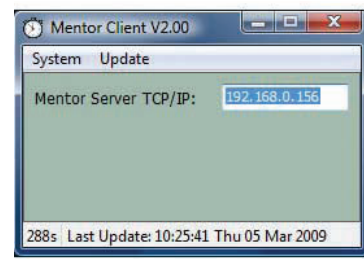


Fig 2-2: Mentor Server Address.

Force Update

To manually force Mentor Client to refresh the time and date from a Mentor Server, select 'Update→Force Now' from the menu.

Note: Should you have any queries regarding this product, please contact our **Technical Support Team**, on +44(0)1933 650700 or email technical.support@sonifex.co.uk.

Revision 1.02 August 2012
©Sonifex Ltd, 2000-2012
All Rights Reserved

Sonifex Ltd, 61, Station Road, Irthlingborough,
Northants, NN9 5QE, England.

Tel : +44 (0)1933 650 700
Fax : +44 (0)1933 650 726
Email : sales@sonifex.co.uk or technical.support@sonifex.co.uk
Web : http://www.sonifex.co.uk

Information in this document is subject to change without notice and does not represent a commitment on the part of Sonifex Ltd. Sonifex Ltd shall not be liable for any loss or damage whatsoever arising from the use of information or any error contained in this manual.

No part of this manual may be reproduced or transmitted in any form or by any means, electronic or mechanical, including photocopying, recording, or information storage and retrieval systems, for any purpose other than the purchaser's personal use, without the express written permission of Sonifex Ltd.

Unless otherwise noted, all names of companies, products and persons contained herein are part of a completely fictitious adaptation and are designed solely to document the use of Sonifex products.

Sonifex Mentor Client Installation and Operation



Fig 2-1: Mentor Client Window.

Overview

Mentor Client is used to receive time and date information from Mentor Server software installed on a network connected PC.

Installation

Install Sonifex Mentor Client onto the computers that you want to receive time and date updates from Mentor Server.

To install the software, select 'Mentor Client Installation' from the Sonifex Software Installation CD-ROM.

A menu item called 'Start→Programs→Sonifex→Mentor Client' will be created, as well as a 'Start→Programs→Startup→Mentor Client'.

The Mentor Client Window

The Mentor Client window consists of the Server Source Status display, the current time and date displays and a status bar.

Operation

Specifying a Mentor Server

Specify the TCP/IP address of the Mentor Server in the settings screen. The TCP/IP address can be determined by checking the Network options in the Control Panel of the server computer. Remember to save your settings if the Mentor Server address is changed.

Sonifex Mentor Server Installation and Operation

The Mentor Time Server is software which runs on a MS-Windows XP/Vista/Windows 7™/Windows 8 PC and synchronizes a number of MS-Windows XP/Vista/Windows 7™/Windows 8 client machines or Sonifex Net-Log units to its time. The client PCs or Net-Logs read the server time and have their time set using TCP/IP at regular intervals.

Mentor Server **must** be run as an administrator on **Windows 8** otherwise you cannot connect to any NTP remote servers.

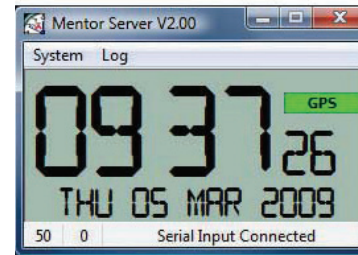


Fig 1-1: Mentor Server Window.

Overview

Mentor Server is used to distribute time and date information to either Mentor Client software installed on network connected PCs, or to Sonifex Net-Log audio loggers on the same TCP/IP network.

Licensing

Mentor Server has a maximum number of clients that can be served in any one hour. This is determined by the volume of licences purchased from Sonifex.

The number of licences can be increased at any time by 'System->Licences.' from the drop-down menu. You will require a licence key from Sonifex.

Installation

Install Sonifex Mentor Server onto the computer with the accurate time that you want to distribute to other computers on a connected network.

To install the software, select 'Mentor Server Installation' from the Sonifex Software Installation CD-ROM.

A menu item called 'Start→Programs→Sonifex→Mentor Server' will be created, as well as a 'Start→Programs→Startup→Mentor Server'.

The Mentor Server Window

The Mentor Server window consists of the Clock Source Status display, the current time and date displays and a status bar.

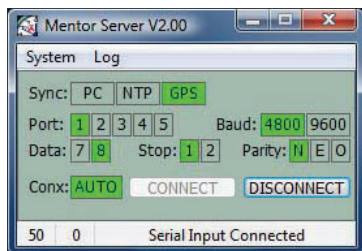
Operation

Clock Sources

Mentor Server can distribute time and date information sourced from the PC Clock, an NTP server, a GPS Receiver.

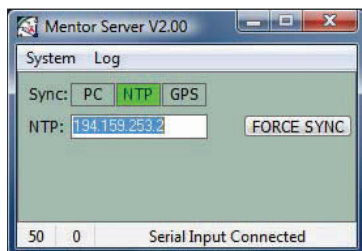
Fig 1-2: Clock Source Status.

S2 & GPS Connection



When using the GPS Receiver as the source, the connection details (port, baud rate etc) can be modified from the settings screen.

NTP Connection



To synchronise to an NTP server, select NTP from the settings screen and enter the TCP/IP address of a known NTP server.

Mentor Server will attempt to synchronise your computer's time every 1 hour with the NTP source. Any connection errors will be noted in the Log.

The Log

To display a list of connections made to Mentor Server during the last hour, Select 'Log→Show' from the menu.

After each hour of operation, Mentor Server's log window will be emptied, and the client count will reset - allowing for another MAX_LICENCE number of clients to attach.

The Status Bar

The left-most panel displays the maximum number of client connections allowable. This is dependent on the licence settings.

The centre panel displays the number of client connections during the last hour.

Note: Should you have any queries regarding this product, please contact our Technical Support Team, on +44(0)1933 650700 or email technical.support@sonifex.co.uk.