

SureStream in a box for existing IP codecs!



POWERFUL PERFORMANCE

- Increases link reliability by stream diversification
- Connects to IP Codec using UDP/RTP
- Data agnostic – streams any data (audio, video, EDI-data and other real-time, mission-critical data).



POWERFUL CONTROL

- Intuitive WEB GUI for ease of use
- SNMP monitoring included
- AUDEMAT ScriptEasy enabled, allows automated actions



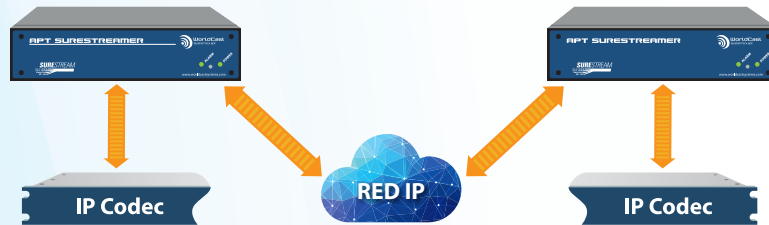
POWERFUL SAVINGS

- Ensures “Always On” redundancy
- Cost savings when used with public internet
- APT SureStreamer deployed as a node can reduce Telco costs dramatically

Applications

All the Benefits of SureStream on Your Existing IP Audio Codecs!

For broadcasters who wish to benefit from the cost savings and reliability offered by SureStream but don't want to invest in new Codec hardware, the APT SureStream is the perfect solution. APT SureStream can sit in front of UDP/RTP single port IP Audio Codec from any manufacturer enabling the use of easily affordable IP connections to deliver broadcast-grade audio with no interruptions, glitches or drop-outs. SureStream continues to provide a seamless audio stream, even when one of the contributory links suffers a total Loss of Connection.



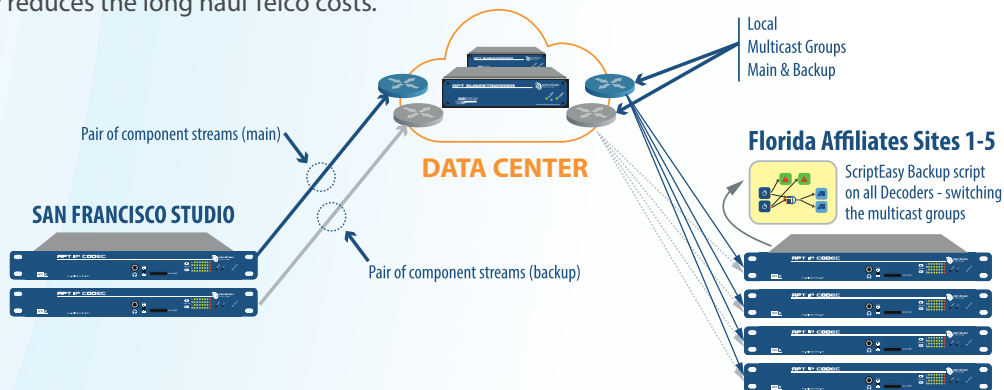
Remote Hub application

Remote Hub describes the wireless ingress from a mobile unit to the APT SureStream and the network. It allows the talent to roam within the range of the wireless coverage to conduct interviews etc. The APT SureStream acts as private Wi-Fi access point for the mobile unit and connects the talent's device reliably with the connected network utilizing the APT SureStream Technology.



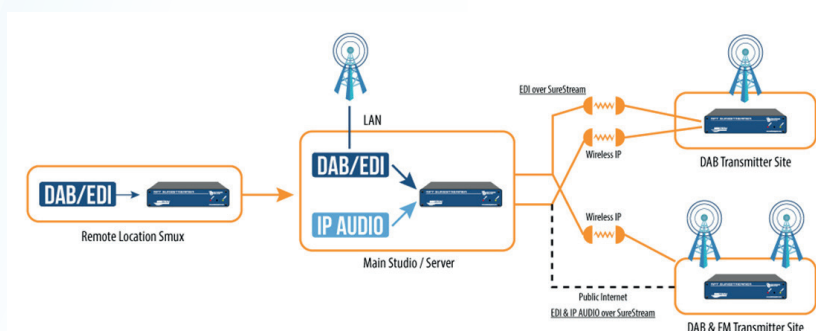
SureStream Data-Node to reduce Telco costs

This application is for broadcasters who wish to save on operational costs by utilizing a Telco data center or other POP close to the broadcasting area. The studio streams only one pair of component streams into the remote data center. In the data center, the APT SureStream receives the program stream and multiplies it using Multicast or Multiple Unicast technology. Using the APT SureStream as a node to migrate the Multicast function closer to the decoder significantly reduces the long haul Telco costs.



EDI DISTRIBUTION FOR DAB NETWORKS

For DAB applications, a DAB license applied to the SureStream unit can enable broadcasters to transport EDI data in addition to IP Audio. They can therefore replace dedicated internet links and expensive EDI switches with easily affordable public internet links.



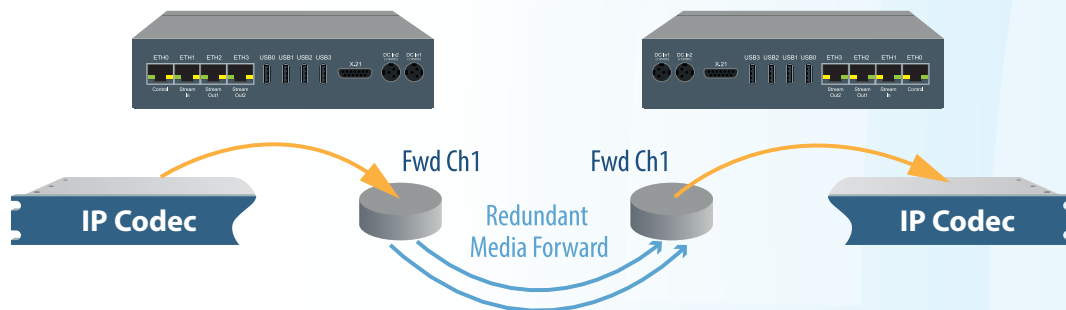
Key Features

FEATURES

- Enables affordable upgrade to cutting-edge IP technology
- Connects to standard IP audio codecs from many manufacturers, as long as they use UDP/RTP
- Connect via 2 wired connections OR
- Connect via both wired & WIFI links
- Ensures "Always ON" Redundancy
- Enables cost savings with use of public internet
- Algorithm-agnostic Unit - does not matter what coding scheme used
- Uses tried & tested, Multiple Award-winning APT SureStream Technology
- Intuitive web interface and SNMP support



The Principle of Stream Forwarding



Broadcast Audio over the Public Internet

SureStream technology is a revolutionary innovation from APT that enables broadcasters to use inexpensive IP links and still maintain professional broadcast-grade audio quality and reliability.

It delivers the audio quality and reliability you expect from a T1/E1 link at a fraction of the associated cost. APT SureStream Technology also offers the added benefit of «Always-On Redundancy». With APT SureStream Technology, you can save thousands on your audio transport bills and still offer your listeners the highest quality sound.

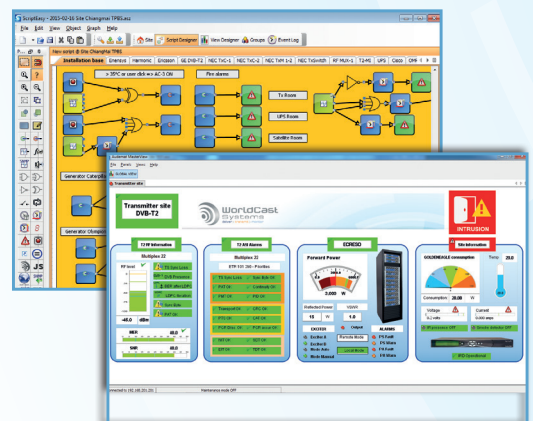


APT SureStream Technology Awards



Advanced Telemetry and Facility Management with ScriptEasy

AUDEMAT ScriptEasy is the revolutionary facility control software developed by WorldCast Systems to give users the power and flexibility to create "Smart" sites; ones that can automatically take action to correct any critical errors that affect operations. Featuring an intuitive Graphic User Interface (GUI), AUDEMAT ScriptEasy incorporates GPIO functions, serial communications, logic operators, live user inputs, timers and more. This allows the site operations to be "scripted", to allow evaluation of multiple parameters and even automatically engage backup systems, while simultaneously alerting relevant technical personnel.



MasterView-Remote Customized view(s)

The innovative interface, consisting of the AUDEMAT ScriptEasy Designer and the MasterView modules, supports easy development and allows real time status display and management.



See more about
APT SURESTREAMER

Technical Features



Technical specification

Interfaces	
Ethernet	4x RJ45 / 2x Fast Ethernet, 2x Gigabit Ethernet
USB	4x USB interfaces for future use (supplies 5VDC, up to 1.500mA)
X.21	Synchronous X.21 (future use)
Power Supply	Dual DC power supply connector with locking capability for ext. PSU
Network and Control	
Control	Web interface, SNMP, ScriptEasy, WorldCast Manager
User Management	2 level accounts (Admin & Guest)
Email alerts	SMTP client for email alerts (Alarms)
Ethernet IP	IEEE 802.3, IPV4, manual port speed settings or auto-negotiation
Port assignment	Flexible assignment of physical ports (LAN/WAN/ Management)
Protocols and Services	FTP, HTTP, HTTPS, ICMP, IGMPv2/3, NTP, SNMP, SMTP, DNS, DDNS, UPnP, VLAN (802.1q), TCP/IP
Routing	Policy routing and Layer 3 capability, individual forwarding rules
Stream Forwarding	IP Forwarding (UDP), Media Forwarding (RTP/ UDP)
Modes (UDP)	Unicast, multiple-unicast, Multicast, Multicast with Source Authentication (IGMPv3/SSM)
Network Security	Firewall features
Options	2nd Power supply, software licenses
Performance and Monitoring	
Data Throughput	~25Mbit/s LAN, 2x 25Mbit/s WAN varies with packet sizes
Monitoring	Performance monitor per stream (IP statistics)
Alarm Reporting	System Events Logging, SNMP TRAPs, Email alert

Physical specification

External Dimensions (H/W/L)	44mm x 220mm x 160mm 1.73" x 8.66" x 6.3"
Weight	< 1.5 kg (3.3 lbs)
Power Supply ext.	100-240 V / 50-60 Hz 12VDC 36W (wall-mount)
Power Consumption	Typical 15W depends on ext. Loads (USB)
Cooling	Passive (convection), no fans
Guaranteed Working Temperatures	0°C - +45°C
Humidity	Up to 95% relative humidity (non-condensing)
Compliance	CE, RoHS

Order information

APT SURESTREAMER	
REF	DESCRIPTION
TFP0114	Standard version, Desktop, 1PSU, 1RJ45 cable
Software Options	
CD00168	DAB Licence for APT SureStreamer
Hardware Options	
SPP00125	19" rack mount
SP01976	2nd Power supply
Services	
06633	1/2-day online training or technical assistance on product installation

Technical specification are subject to change without prior notice – 05/2018

Head Office

📍 WorldCast Systems S.A.S
20 avenue Neil Armstrong
33700 Mérignac (Bordeaux Métropole) FRANCE
☎ +33 (0)5 57 928 928
✉ contact@worldcastsystems.com

WorldCast Systems Inc

📍 19595 NE 10th Avenue Suite A
Miami, FL 33179
USA
☎ +1 305 249 3110
✉ ussales@worldcastsystems.com