

Quick Start Guide TouchControl 5



Read Before Unpacking!
Vor dem Auspacken lesen!

Full
Documentation



RTW
EYES ON YOUR AUDIO

EN:

Quick Start Guide for

RTW TouchControl 5

© **RTW** April 2024 | Changes without prior notice!

RTW GmbH & Co. KG

Am Wassermann 25 | 50829 Koeln (Cologne) | Germany

Phone +49 221. 70 913-0

sales@rtw.com | www.rtw.com

ATTENTION - This quick start guide provides an overview of the steps required to get your TouchControl 5 up and running as quickly as possible.

The detailed operating manual, more documentation and the latest software is available for download at the RTW website (Support > Manuals & Software Downloads > Monitor Control > TouchControl 5).

DE:

Schnellstart-Anleitung für

RTW TouchControl 5

© **RTW** 04/2024 | Änderungen vorbehalten!

RTW GmbH & Co. KG

Am Wassermann 25 | 50829 Köln | Germany

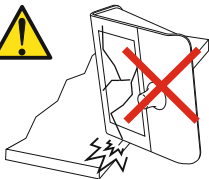
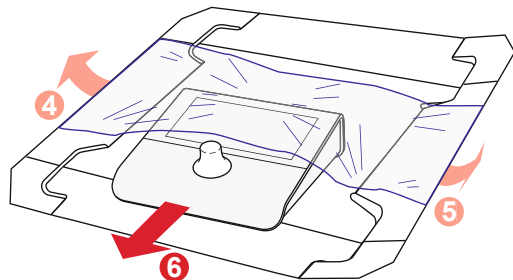
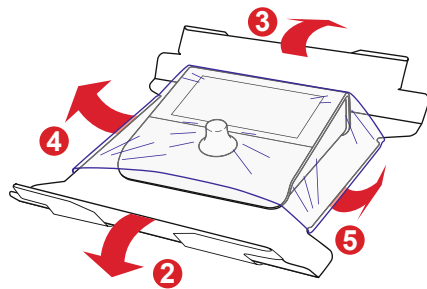
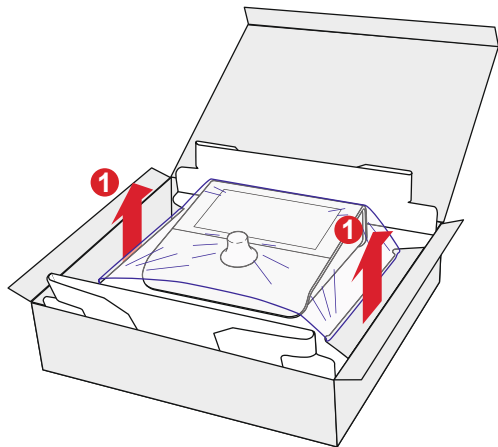
Phone +49 221. 70 913-0

sales@rtw.com | www.rtw.com

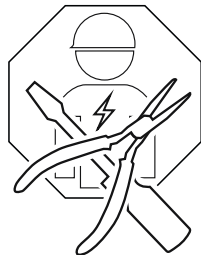
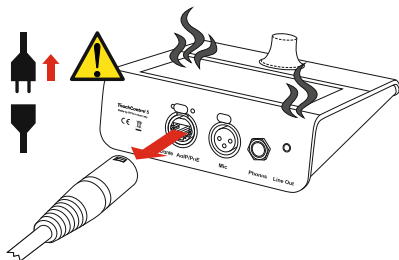
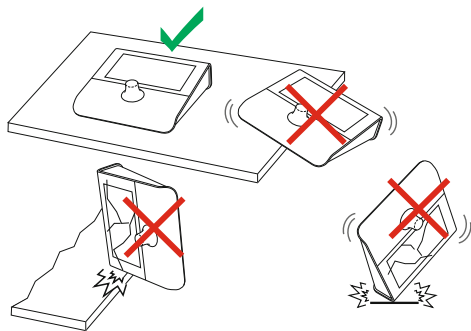
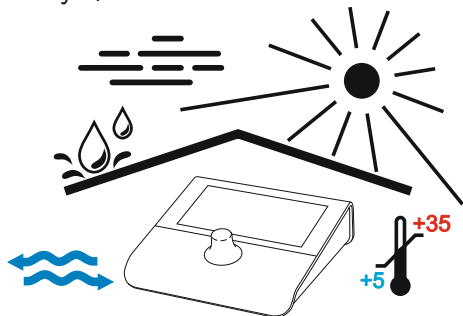
ACHTUNG - Diese Schnellstart-Anleitung gibt Ihnen einen ersten Überblick über die Schritte zur schnellen Inbetriebnahme Ihres TouchControl 5.

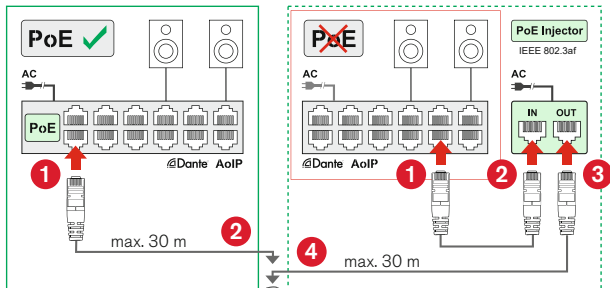
Das ausführliche Benutzerhandbuch, weitere Dokumentationen und die neueste Software stehen auf der RTW-Webseite (Support > Manuals & Software Downloads > Monitor Control > TouchControl 5) zum Download bereit.

Unpacking | Auspacken



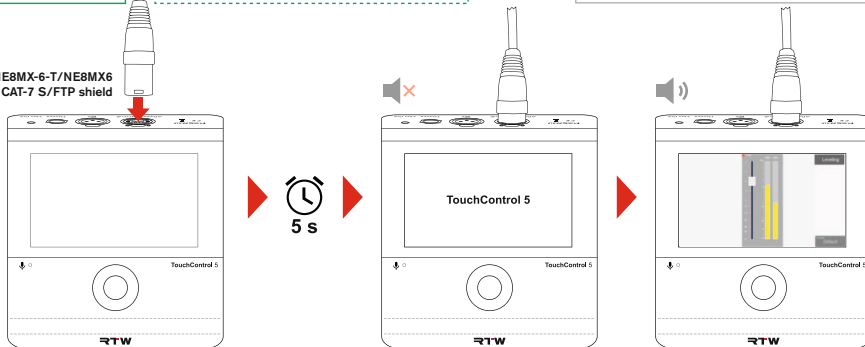
Safety | Sicherheit





etherCON NE8MX-6-T/NE8MX6
+ wired CAT-7 S/FTP shield

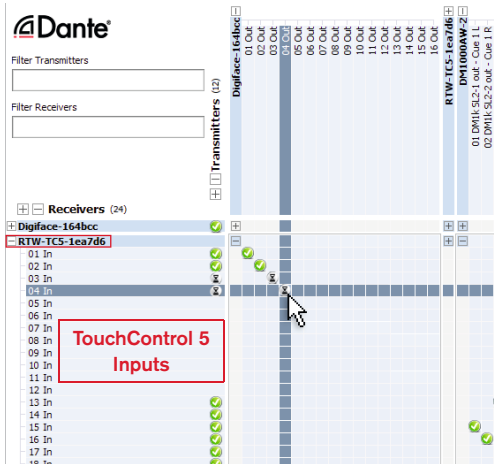
TouchControl 5 is certified with CAT 7 cables, but CAT 5E, CAT 6 or CAT 7 can be used. Maximum cable length: 30 m



Integrate With Dante® Controller | In Dante®-Controller einbinden

EN: Choose **Transmitter** sources and assign them to the TouchControl 5 **input channels**. |

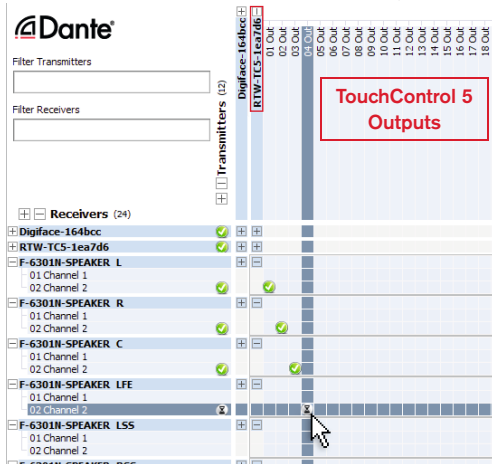
DE: **Sender**-Quellen auswählen und den TouchControl-5-Eingangskanälen zuordnen.



The screenshot shows the Dante Controller interface with the 'Receivers' list on the left and 'Transmitters' on the right. A red box highlights 'RTW-TCS-1ea7d6' in the Receivers list, and a red box highlights '04 In' in the input channels. A mouse cursor is pointing at the intersection of the transmitter and the input channel, indicating an assignment. The interface includes filter boxes for transmitters and receivers, and a list of 18 input channels (01 In to 18 In).

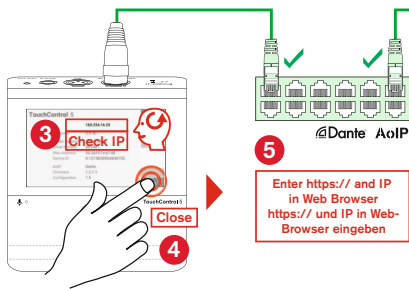
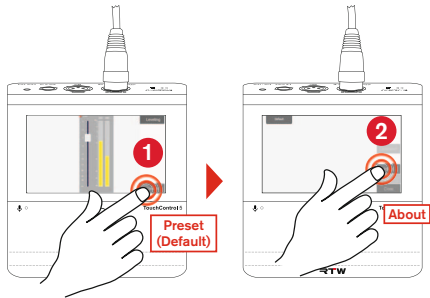
EN: Choose TouchControl 5 **output channels** and assign them to the **Receiver** devices (e. g. loudspeakers). |

DE: TouchControl-5-**Ausgangskanäle** auswählen und den **Empfänger**-Geräten zuordnen (z. B. Lautsprecher).

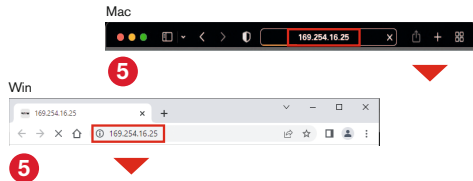


The screenshot shows the Dante Controller interface with the 'Receivers' list on the left and 'Transmitters' on the right. A red box highlights 'RTW-TCS-1ea7d6' in the Transmitters list, and a red box highlights '04 Out' in the output channels. A mouse cursor is pointing at the intersection of the transmitter and the output channel, indicating an assignment. The interface includes filter boxes for transmitters and receivers, and a list of 18 output channels (01 Out to 18 Out). A red box highlights 'TouchControl 5 Outputs' in the output channels list.

Find IP Address | IP-Adresse finden



5 Enter `https://` and IP in Web Browser
`https://` und IP in Web-Browser eingeben





MAN32500

RTW GmbH & Co. KG
Am Wassermann 25 | 50829 Koeln (Cologne) | Germany
Phone: +49 221. 70 913-0
Internet: www.rtw.com | E-Mail: sales@rtw.com

RTW
EYES ON YOUR AUDIO