

HD/SD Logo/Title Generator

LTG-50HS

The LTG-50HS is a HD/SD logo/title generator capable of superimposing camera titles, date and time, logos, and graphics on input video signals.



Character displays

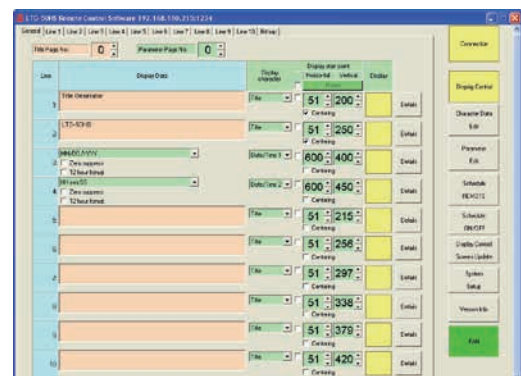
- Fonts: Two types of display fonts (Gothic and Roman)
- Text: Up to 40 characters x 10 lines per page
- Pages: Up to 256 pages with max. 400 characters
- Font size setting: Five font size settings by line
- Font edge setting: Font edge ON/OFF and change colors by line
- Font color setting
- Text transparency setting
- Display position: Adjustable within 80% of the effective screen area
- Date and time display (with external correction input)

Special displays

- Remote control on text, color, and other settings
- Bitmap character display function that enables logos and graphics to be displayed at any selected location
- Standard configuration features a LAN interface as well as RS-232C for allowing easy display setting and display character registration from a PC
- Includes software for easy typing and setting on PC as well as weekly scheduling of page control



Display Image



Control Software Image

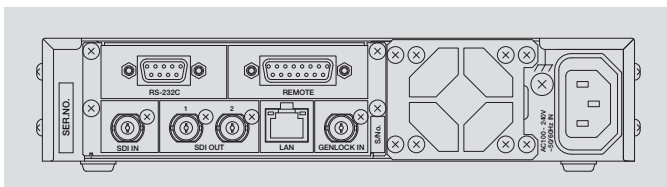
Specifications

Standard	HD-SDI: 1080/60i, 1080/59.94i, 1080/50i, 1080/30p, 1080/29.97p, 1080/25p, 1080/24p, 1080/24PsF, 1080/23.98p, 1080/23.98PsF, 720/60p, 720/59.94p, 720/50p *1080/25PsF is supported by 1080/50i, 1080/30PsF by 1080/60i and 1080/29.97PsF by 1080/59.94i SD: 525/60, 625/50	
Video Input	HD-SDI: 1.485Gbps or 1.485/1.001Gbps or SD-SDI: 270Mbps, 75Ω, BNC, 1 input (bypass through to Video outputs supported)	
Genlock Input	BB: NTSC: 0.429Vp-p/PAL: 0.45p-p or Tri-level Sync: ±0.3V, 75Ω, BNC, 1 input	
Pull-in Range	Within ±0.5H (to the genlock phase)	
Video Outputs	HD-SDI: 1.485Gbps or 1.485/1.001Gbps or SD-SDI: 270Mbps, 75Ω, BNC, 2 outputs (1 line x 2 connectors) *The ancillary data including embedded audio will be passed through.	
I/O Delay	- Input Lock settings: Minimum delay (*varies depending on the video format) - GenLock settings (BB or TRI): 1H (when the input and genlock phases match)	
Display Characters	Number of characters: 40 characters, 10 lines/page	Number of pages: Max. 256 pages *400 characters/page
	Characters: Alphabetical, Numeric and Symbol (ISO8859-1)	Fonts: 2 types (Gothic and Roman)
	Character sizes: 5 size (line units)	Display position: Adjustable within 80% of the effective screen area (line units)
	Character color: User selectable (line units, Body and Edge)	
	Clock display: 2 lines - Display format: Year, month, day, hour, minute, second (24-hour display / 12-hour display selectable) - Clock Accuracy: ±10 seconds or less per month (0°C - 40°C)	
	Bitmap display: Logo and image files can be displayed at any selected position	
Interfaces	REMOTE input: D-sub 15-pin (female), 1 port - Switch-page: TTL negative logic, level signal or make contact input pulse width 100ms or more 8 inputs - Time correction input: TTL negative logic or make contact input pulse width 100ms or more 1 input - Fan alarm output: Make contact relay, Max 24VDC 100mA, 1 output RS-232C: 9-pin D-sub (male), 1 port LAN: 100Base-TX, RJ-45 (Category 5), 1 port	
Title Display	- Character limit: Max. 40 characters x 10 lines - Page limit: 256 pages - Character set: ISO8859-1 (Latin-1) character set - Font type: Roman and Gothic - Font sizes: 5 levels (per-line setting) - Display position: Per-line setting - Title color: Per-line setting (Text and background: full color)	
Data / Time Display	Display line selectable (Up to 2 lines), Year, month, day, hour, minute and second, 24-hour display / 12-hour display switchable * Display format selectable	
Clock precision	Less than ±10 seconds per month (at 0°C to 40°C)	
Data Backup	Lithium battery (Clock data), Stored to FLASH memory (Program erase cycle limit: appr. 200000 P/E cycles) (Except clock data)	
Temperature / Humidity	0°C - 40°C / 30% - 90% (no condensation)	
Power / Consumption	100VAC - 240VAC ±10% 50/60Hz / 27VA (25W) (at 100VAC)	
Dimensions / Weight	212 (W) x 44 (H) x 350 (D) mm / 2.5kg	
Consumables	Backup battery: CR-2032 Replace every 5 years (at room temp), Cooling fan: P-1439 Replace every 5 years (at room temp)	
Accessories	Operation manual, AC cord, Control Software installation CD-ROM (Windows)	

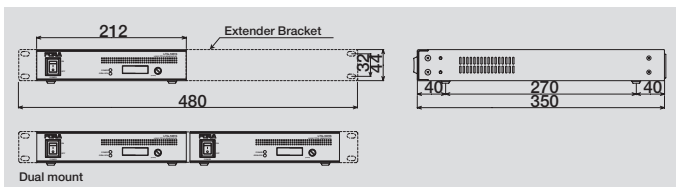
Remote Control Software System Requirement

OS	Windows XP SP2 (32 bit) (Professional), Windows Vista SP1 (32 bit) (Business), Windows 7 (64bit/32bit) (Professional), Windows 8, Windows 8.1, Windows 10
CPU	1GHz or higher, 2GHz or higher (When using Windows 7 32bit), 64bit processor (When using Windows 7 64bit)
Memory	1GB or more recommended, 2GB or more recommended (When using Windows 7)
Display	Resolution: 1024 x 768 pixel or more recommended
Software	NET Framework 2.0, Windows Installer 3.1

Rear Panel



External Dimensions



Head Office: 3-8-1 Ebisu, Shibuya-ku, Tokyo 150-0013, Japan

ISO 9001 and 14001 certified (Sakura R&D)
<http://www.for-a.com/>

FOR-A Corporation of America: Tel: +1-714-894-3311
11155 Knott Ave., Suite G&H, Cypress, CA 90630, U.S.A.

FOR-A Corporation of America East Coast Office: Tel: +1-201-944-1120
2 Executive Drive, Suite 670, Fort Lee Executive Park, Fort Lee, NJ 07024, U.S.A.

FOR-A Corporation of America Service Center: Tel: +1-352-371-1505
2400 N.E. Waldo Road, Gainesville, FL 32609, U.S.A.

FOR-A Corporation of America Miami Office: Tel: +1-305-931-1700
8333 North West 53rd Street, Suite 450, Doral, FL 33166, U.S.A.

FOR-A Corporation of Canada: Tel: +1-416-977-0343
1131A, Leslie Street #209, Toronto, Ontario, M3C 3L8, CANADA

FOR-A Europe S.r.l.: Tel: +39-039-879-778
Via Volturmo, 37, 20861 Brugherio MB, Italy

FOR-A UK Limited: Tel: +44-(0)20-3044-2935
Trident Court, 1 Oakcroft Road, Chessington, KT9 1BD, UK

FOR-A Italia S.r.l.: Tel: +39-039-881-086/103
Via Volturmo, 37, 20861, Brugherio MB, Italy

FOR-A Corporation of Korea: Tel: +82-(0)2-2637-0761
1007, 57-5, Yangsan-ro, Yeongdeungpo-gu, Seoul 150-103, Korea

FOR-A China Limited: Tel: +86-(0)10-8721-6023
1307 Huateng Building, No. 302, 3 District, Jinsong, Chaoyang, Beijing 100021, China

FOR-A Middle East-Africa Office: Tel: +971-(0)4-551-5830
Dubai Media City, Aurora Tower, Office 1407, P.O. Box 502688, Dubai, UAE

Agiv (India) Private Limited (FOR-A India): Tel: +91-22-2673-3623
2nd Floor, Valecha Chambers, Link Road, Andheri (W), Mumbai 400053, India